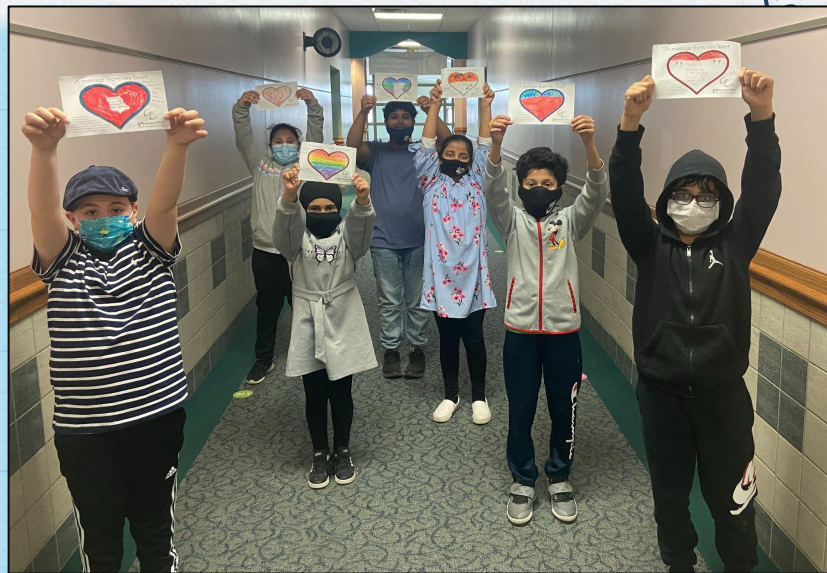


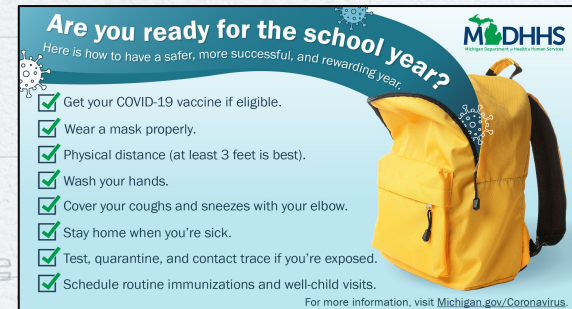
SAFE RETURN TO SCHOOL AUGUST 2021



Students First
Inspire, Educate, Celebrate

BACKGROUND

- ✗ The goal is to maintain a school environment that supports in-person learning and provides public health protections for students, staff, and visitors
- ✗ Crisis Committee of instructional, non instructional, and nurses developed a layered mitigation protocol for our schools
- ✗ The protocol includes layered prevention strategies.
 - We have assessed:
 - The reported COVID cases in the district and in the region
 - Recent [guidance issued by the Centers for Disease Control and Prevention \(CDC\)](#) & [Michigan Department of Health and Human Services \(MDHHS\)](#)
- ✗ The approach to layering mitigation measures and giving consideration to the level of community spread **is** consistent with MDHHS and CDC recommendations



FALL 2021 MODE OF INSTRUCTION

- ✗ First Day is Monday, August 30, 2021
- ✗ Students will receive a full day of face to face instruction 5 days a week
- ✗ Special and additional emphasis on Social Emotional Learning
- ✗ Emphasis on small groups instruction and accelerated learning
- ✗ Note- District has revised [school start times for elementary, middle, & high](#)
- ✗ Dearborn Public Schools Virtual K-12 School enrollment deadline was June 8th, 2021.
- ✗ No longer have the flexibility with hours/days from MDE
- ✗ Revert to pre pandemic instructional and grading practices
- ✗ June 2021 marked the last monthly submission of the ECOL plan.
This was a requirement during the 2020-21 school year



| Weekly Report for Schools from WCHD | Residents of Dearborn Cases | Out-Wayne County Cases | Rate of Positivity for Out-Wayne County | Cases on school grounds during infectious period | CDC Risk Level Positivity Rate, Cases/100,000 |
|-------------------------------------|-----------------------------|------------------------|---|--|---|
| 5/30-6/6 | 35 | 310 | 2.7% | 0 | Low 2.7%, Moderate 32.2 |
| 6/6-6/12 | 31 | 255 | 2.1% | 0 | Low 2.1%, Moderate 25.7 |
| 6/13-6/19 | 18 | 143 | 1.3% | 1 | Low 1.6% Moderate 16.6 |
| 6/20-6/26 | 18 | 113 | 1.2% | 0 | Low 1.1%,Moderate 11.9 |
| 6/27-7/3 | 17 | 266 | 3.0% | 0 | Low 2.9%,Moderate 26.3 |
| 7/4-7/10 | 23 | 154 | 1.9% | 0 | Low 1.6%,Moderate 15.6 |

Website for MISTARTMAP Risk Levels and CDC Transmission Indicators: [Dashboard for CDC and MISTARTMAP](#)

CDC transmission indicator levels: Low, **Blue**; Moderate, **Yellow**; Substantial, **Orange**; High, **Red**

2 metrics used for CDC transmission indicator levels are: 1) test positivity, 2) new weekly cases per 100,000

Risk Thresholds (% Positive)

Low: <5% (Blue) Moderate 5-<8% (Yellow) Substantial 8-<10% (Orange) High >=10% (Red)

Risk Thresholds (Cases per 100,000)

Low: <10 (Blue) Moderate 10-49 (Yellow) Substantial 50-99 (Orange) High >=100 (Red)

| Weekly Report for Schools from WCHD | Residents of Dearborn Cases | Out-Wayne County Cases | Rate of Positivity for Out-Wayne County | Cases on school grounds during infectious period | CDC Risk Level Positivity Rate, Cases/100,000 |
|-------------------------------------|-----------------------------|------------------------|---|--|--|
| 7/11-7/17 | 38 | 235 | 2.8% | 1 | Low 2.5%, Moderate 24.1 |
| 7/18-7/24 | 11 | 333 | 3.6% | 0 | Low 3.4%, Moderate 36.5 |
| 7/25-7/31 | 40 | 534 | 5.2% | 2 | Low 4.5% Substantial 52.1 |
| 8/1-8/7 | 103 | 947 | 6.7% | 3 | Moderate 6.4% Substantial 94.1 |
| 8/8-8/14 | 140 | 1,148 | 7.6% | 6 | Moderate 7.4% High 113.1 |
| 8/15-8/21 | 167 | 1,380 | 7.7% | 5 | Moderate 7.7% High 127.8 |

Website for MISTARTMAP Risk Levels and CDC Transmission Indicators: [Dashboard for CDC and MISTARTMAP](#)

CDC transmission indicator levels: Low, **Blue**; Moderate, **Yellow**; Substantial, **Orange**; High, **Red**

2 metrics used for CDC transmission indicator levels are: 1) test positivity, 2) new weekly cases per 100,000

Risk Thresholds (% Positive)

Low: <5% (Blue) **Moderate 5-<8% (Yellow)** **Substantial 8-<10% (Orange)** **High >=10% (Red)**

Risk Thresholds (Cases per 100,000)

Low: <10 (Blue) **Moderate 10-49 (Yellow)** **Substantial 50-99 (Orange)** **High >=100 (Red)**

JULY 26, 2021 BOARD OF EDUCATION MEETING

The COVID Factor

- Recommendations can start on August 25th.
- If health conditions in our community were to get worse the District would need to review current practices and adjust in accordance with the advice of medical experts.
- The goal has always been to slow the spread of COVID 19, not overwhelm medical facilities, and protect those who are most vulnerable.
- Vaccines have helped in this effort and are encouraged for all who are eligible.



District was very clear that decisions would be based on the most current data related to COVID 19 and health conditions in the community

whenever possible

A wide horizontal banner with a light gray background. It contains numerous small, hand-drawn style icons related to education and learning. These include books, pencils, paper airplanes, globes, musical notes, lightbulbs, calculators, rulers, compasses, protractors, paint palettes, test tubes, leaves, apples, atoms, and geometric shapes like triangles and circles. The icons are scattered across the width of the banner.

- ✗ The year will start with universal indoor masking required for students, staff, and parents regardless of vaccination status
- ✗ As required by federal and state agencies, masks are required while entering, exiting, and riding the school bus
- ✗ Masks are not required when students and staff are outdoors
- ✗ Seating charts for classroom, buses, and lunch rooms (seating charts are needed for contact tracing)
- ✗ Physical distancing of at least three (3) feet between individuals whenever possible

- ✗ The year will start with universal indoor masking required for students, staff, and parents regardless of vaccination status
- ✗ As required by federal and state agencies, masks are required while entering, exiting, and riding the school bus
- ✗ Masks are not required when students and staff are outdoors
- ✗ Seating charts for classroom, buses, and lunch rooms (seating charts are needed for contact tracing)
- ✗ Physical distancing of at least three (3) feet between individuals whenever possible

In order to keep students in school Dearborn will implement layered prevention strategies:

- ✗ Other preventive layers of protection include: increased ventilation, symptom monitoring, screening, quarantines, good handwashing etiquette, and good respiratory etiquette
- ✗ Promote COVID-19 Vaccination – National data shows that more than 90% of the new COVID-19 cases are among unvaccinated or not yet fully vaccinated persons. All staff and students 12 years and older should get vaccinated to protect themselves and others from illness
- ✗ Wayne County Health Department continues to closely monitor COVID-19 data points and it will issue further guidance for school settings if warranted

KEEPING STUDENTS IN SCHOOL

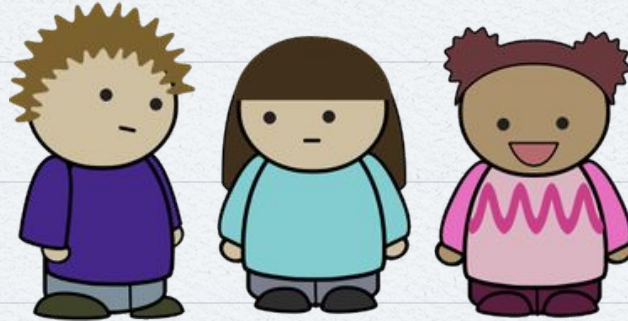
Since 6 foot social distancing is not possible in all classrooms, students who are determined to be close contacts of a person who has COVID 19 will NOT have to quarantine for 10 days, if they are found to be 3-6 feet apart and all are wearing a mask.



Stephanie, Justin, and Jessica all sit in class within 6 feet of each other, and unfortunately Justin tests positive for covid-19. Stephanie and Jessica are considered close contacts. The teacher reports that all 3 of these students were wearing face masks. Justin of course stays home for 10 days (infectious period of covid-19). Stephanie and Jessica may continue to come to school and parents will be notified of the exposure and monitor for any symptoms.

KEEPING STUDENTS IN SCHOOL

Since 6 foot social distancing is not possible in all classrooms, students who are determined to be close contacts of a person who has COVID 19 will NOT have to quarantine for 10 days, if they are found to be 3-6 feet apart and all are wearing a mask.



Sarah, Adam, and Angie all sit in class within 6 feet of each other, and unfortunately Sarah tests positive for covid-19. Adam and Angie are considered close contacts. The teacher reports that these students were not wearing face masks. Sarah of course stays home for 10 days. But also Adam and Angie must remain at home and in quarantine for 10 days.

This scenario causes all 3 students to miss in person instruction.

KEEPING STUDENTS IN SCHOOL

We begin the year with the mask mandate and will continue to assess health conditions

Factors impacting the mask mandates include:

- ✗ Transmission rate
- ✗ County and city health conditions
- ✗ Hospitalization rates
- ✗ Vaccination rates
- ✗ Approval of vaccination for elementary aged students



Students First
Inspire, Educate, Celebrate



Back to School 2021

Visit the district webpage for information on the return to school plan



<https://dearbornschools.org/backtoschool/>

A screenshot of a web browser showing the 'Back to School' page for Dearborn Public Schools. The page has a light blue background with a white header. The header includes the 'Students First' logo and navigation links: Home, District Info, Contact Us, Schools, and Programs. Below the header, the title 'Back to School' is displayed, followed by a breadcrumb link 'Dearborn Public Schools > Back to School'. The main content area features a large heading 'Back to School 2021'. Underneath, there are three sections: 'Relaunching August 2021' with a paragraph about COVID-related changes and a link to the calendar; 'School days' with a paragraph about the 2021-22 school year start; and 'Masks' with a paragraph about mask requirements. To the right of the 'Masks' section is a photograph of a young girl with brown hair, wearing a pink headband and a yellow face mask, standing in front of a school building.



Students First
Inspire, Educate, Celebrate